



**INTERMUNICIPAL  
DEVELOPMENT  
PLAN**

# INTERMUNICIPAL DEVELOPMENT PLAN

## Lac Ste. Anne County and the County of Barrhead No. 11

An **Intermunicipal Development Plan** (IDP) is a statutory document prepared between two (or more) municipalities that share a common border, and where at least one member is not a part of a growth management region.

An IDP ensures future development and land use policy is coordinated between municipalities. **The County of Barrhead** and **Lac Ste. Anne County**, under the direction of Sec. 631 of the *Municipal Government Act*, have agreed to jointly engage in an IDP. This plan has been developed to reduce the possibility of potential conflicts between municipalities, and to ensure the relationship remains strong, transparent and collaborative in the future.

### PLAN AREA

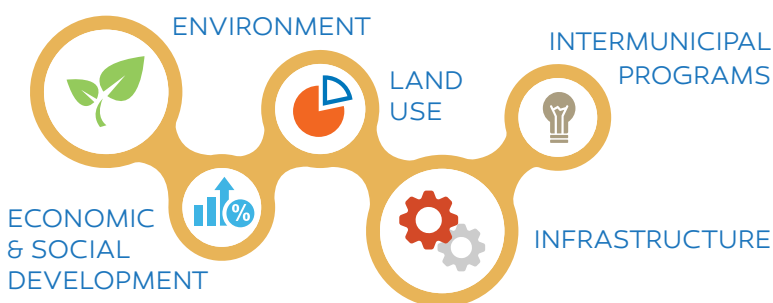
The Plan Area extends 800 metres from the County of Barrhead and Lac Ste. Anne County boundary lines or from the top of bank of a body of water or watercourse. For those lands located adjacent to Isle Lake, the Plan Area boundary shall extend to the bed and shore of the lake. Where the Plan Area boundary is disputed, the boundary depicted in Map 1 below shall prevail. The joint Plan Area covers approximately **13,702** hectares (**33,858** acres) of land.

For a detailed review of the Plan Area and future land uses, refer to Map 2: Future Land Use.

### PURPOSE

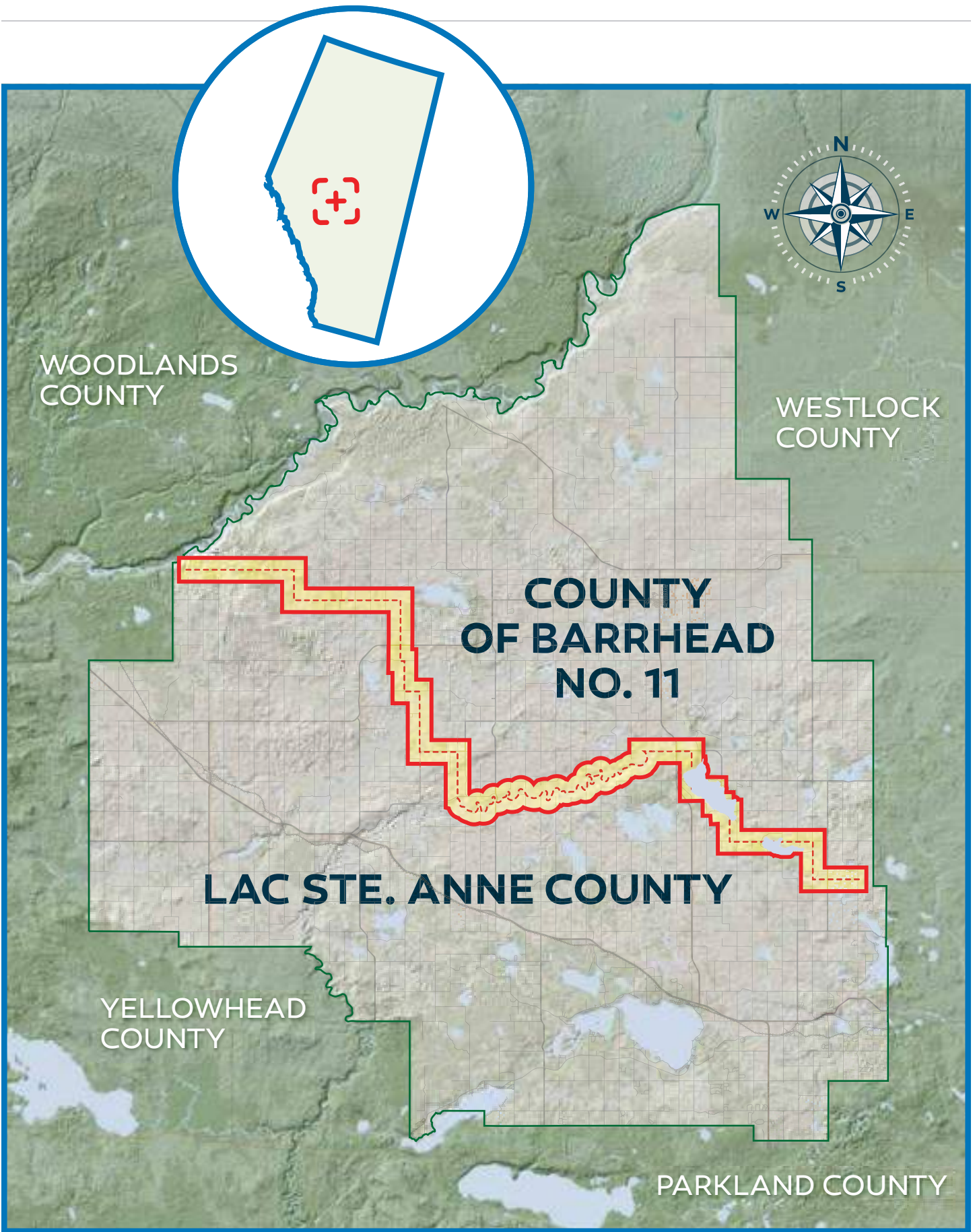
The purpose of the IDP document is to have a co-operative approach for the process of land use and development, managing growth, environmental matters, infrastructure, other vital community services, and dispute resolution along the borders of the County of Barrhead and Lac Ste. Anne County. The Plan shall contain:

## A. Policies for:

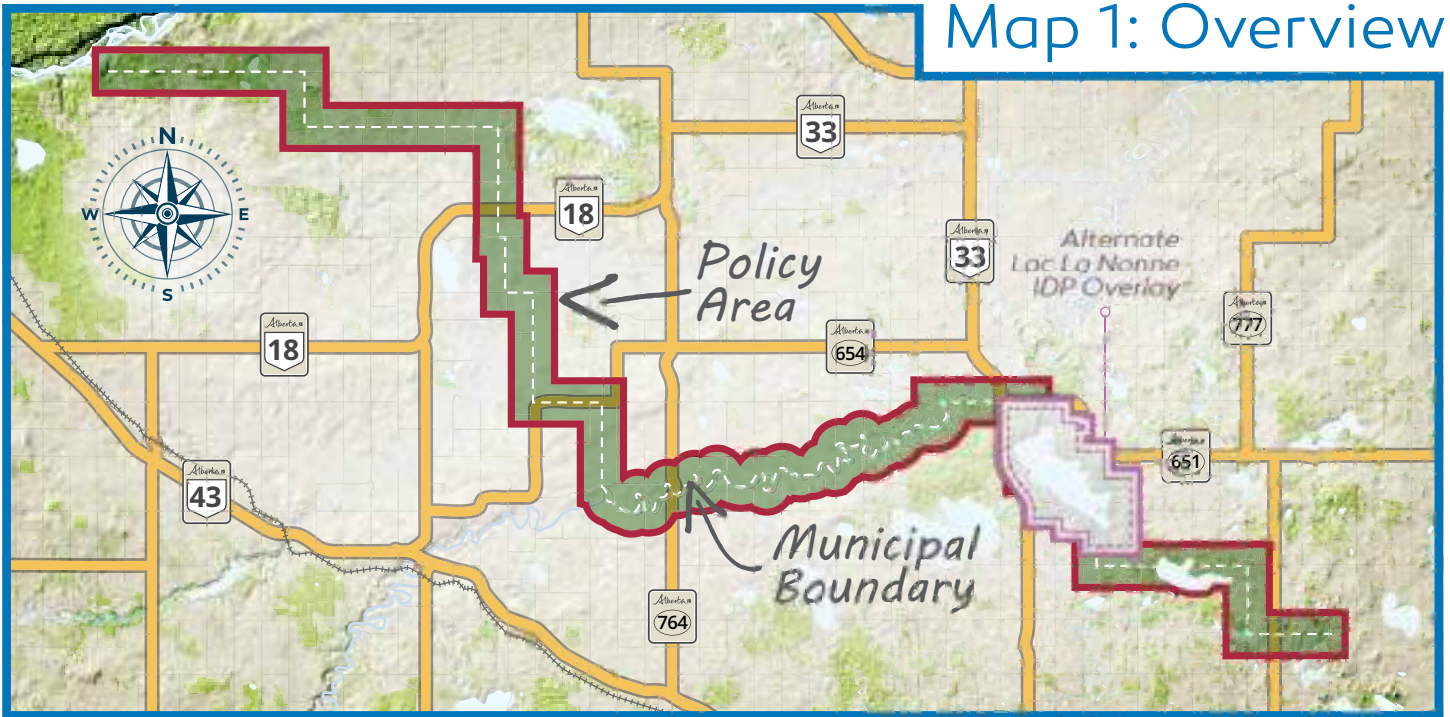


## B. Administration and implementation policies including:

- AMENDMENT PROCESS
- DISPUTE RESOLUTION
- PLAN AMENDMENT OR REPEALING PROCESS
- IDP COMMITTEE
- REVIEW PROCESS
- REFERRAL REQUIREMENTS

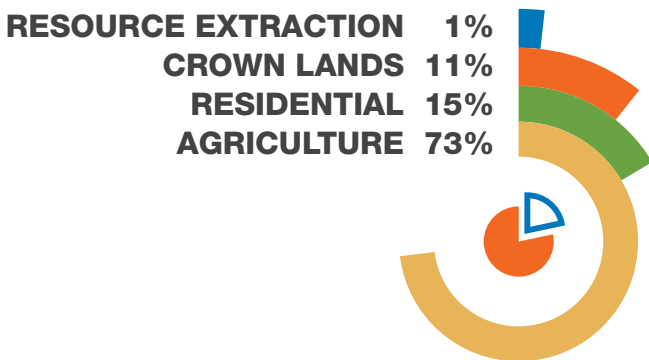


## Map 1: Overview



### GOALS

- To establish in good faith a method for collaboration between both municipalities on land use matters.
- To reduce the potential for future conflict(s) and encourage understanding.
- To identify and conserve environmental features, recreation and open space.
- To harmonize and confirm future land uses, infrastructure, transportation, and development within the Plan Area.
- To provide a process and procedure for dispute resolution, amendments and administration of the Plan.
- To enhance opportunities for increased quality-of-life through a diversified local economy and quality community services.
- To meet requirements established in the *Municipal Government Act* (Section 631) and any other applicable requirement.



## Existing Land Use Within the Plan Area

## LAND USE POLICIES

The County of Barrhead and Lac Ste. Anne County will engage and communicate in good faith on land matters within and outside of the Plan Area. Any disputes shall be addressed through Section 11 of this Plan. Each County will maintain their autonomy within their current boundaries. Within the Plan Area:

### 5.1 Referral(s)

Both Counties shall send the following application(s) to the adjacent municipality for review:

- a. A proposed Municipal Development Plan (MDP) and/or amendment to a MDP that directly impacts the Plan Area;
- b. A proposed Land Use Bylaw (LUB) and/or amendment to a LUB that impacts the Plan Area or a land use district within the Plan Area;
- c. A proposed Area Structure Plan (ASP) and/or amendment to any ASP established within the Plan Area; and,
- d. Any subdivision application within the Plan Area or adjacent lands and/or any discretionary development permit application that may create off-site impacts which affect the adjacent municipality. Off-site impacts include noise, odour, or traffic generation on adjacent road networks.

Comments should be sent back to the referring municipality within 21 calendar days. Past 21 calendar days, the referring municipality will consider there are no objections, comments, or concerns.

### 5.2 Agricultural

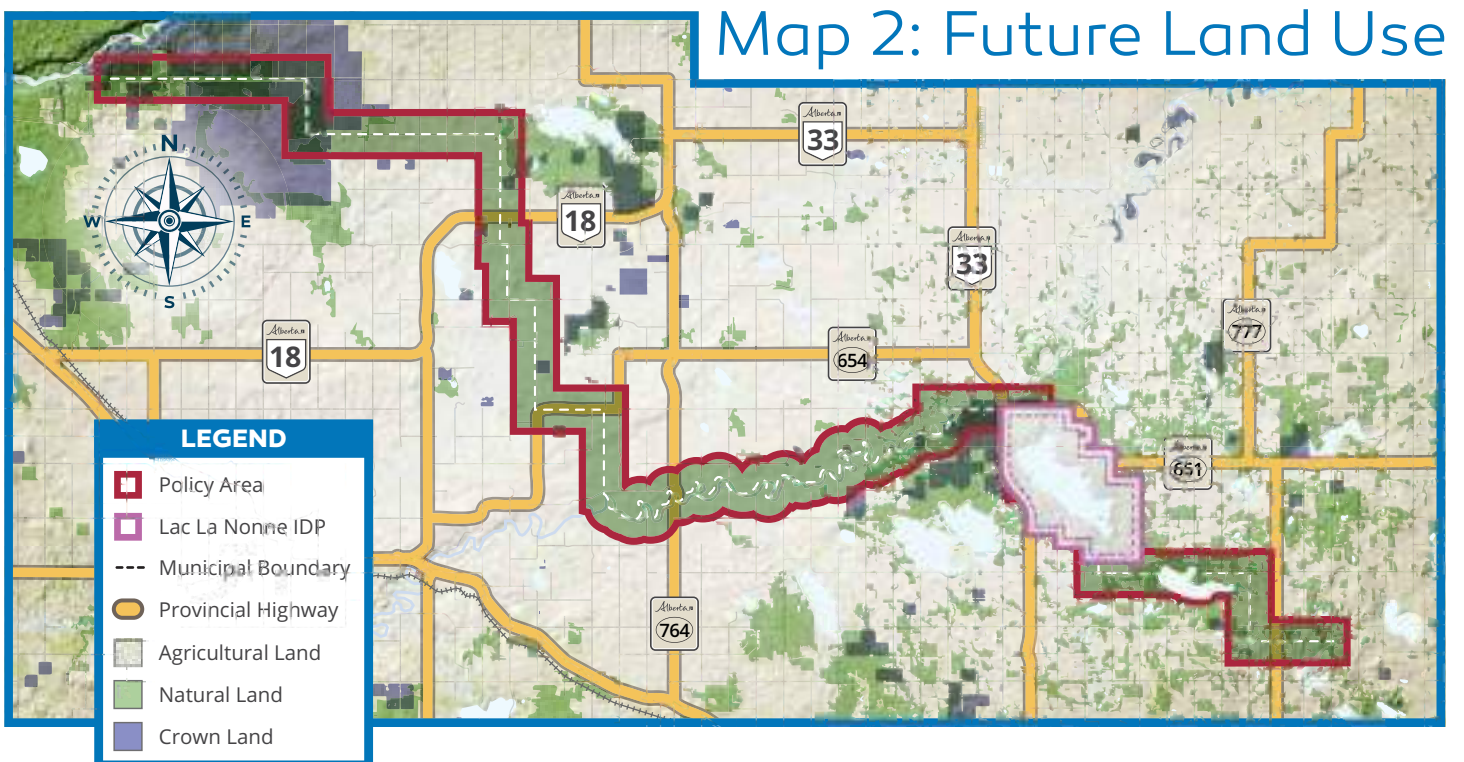
Agricultural use has been identified as being the current and future primary land use within the Plan Area. The Counties, where possible, should minimize the conversion of high capability agricultural lands to non-agricultural use.

### 5.3 Residential

New residential development within agricultural areas should minimize impacts on agricultural lands and sensitive environmental features, maintaining the rural character of Barrhead and Lac Ste. Anne Counties, whenever possible.

### 5.4 Confined Feeding Operations (CFO)

Any new or expanding CFOs within the Plan Area shall follow the *Agricultural Operations Practices Act* and policies in the applicable municipality's MDP and LUB. Applications shall be referred to the adjacent County for review and comment.



## TRANSPORTATION AND INFRASTRUCTURE POLICIES

### 6.1 **Transportation Network Referral(s)**

Any Any proposed changes or expansion to the transportation network within the Plan Area shall be referred to the adjacent municipality and Alberta Transportation (if required) for review and comment prior to any changes (see Map 2: Transportation).

### 6.2 **Alberta Transportation**

Where applicable, the Counties will work together with Alberta Transportation to maintain a safe and effective transportation network within the Plan Area.

### 6.3 **Transportation Networks**

All new and expanding development(s) within the Plan Area shall ensure that long-term transportation corridors are secured in order to maintain safe, coordinated, and efficient networks.

### 6.4 **Development Requirements for Sites with Roadways**

Developers shall construct all roads and linkages to current County of Barrhead and/or Lac Ste. Anne County engineering standards.

### 6.5 **Maintaining Networks**

Each County, with the support of Developers, is responsible for the construction and maintenance of their own new or expanding transportation infrastructure within the Plan Area. Municipalities may enter into a cost sharing agreement for agreed infrastructure that benefits both Counties.

### 6.6 **Servicing and Utilities**

Each County, with the support of Developers, is responsible for the construction and maintenance of their own new or expanding infrastructure within the Plan Area. Municipalities may enter into a cost sharing agreement for agreed infrastructure that benefits both Counties.

### 6.7 **Haul Routes**

Existing haul routes have been identified in Map 2: Transportation. Any application which proposes the use or expansion of municipal road infrastructure for the purposes of hauling natural resources shall include written documentation indicating that the roadway has been, or will be, constructed to the governing municipality's engineering design standards. If required prior to commencement of natural resource extraction/harvesting as a condition of approval, road haul agreements shall be signed if required by the neighboring municipality if their roads are to be used.

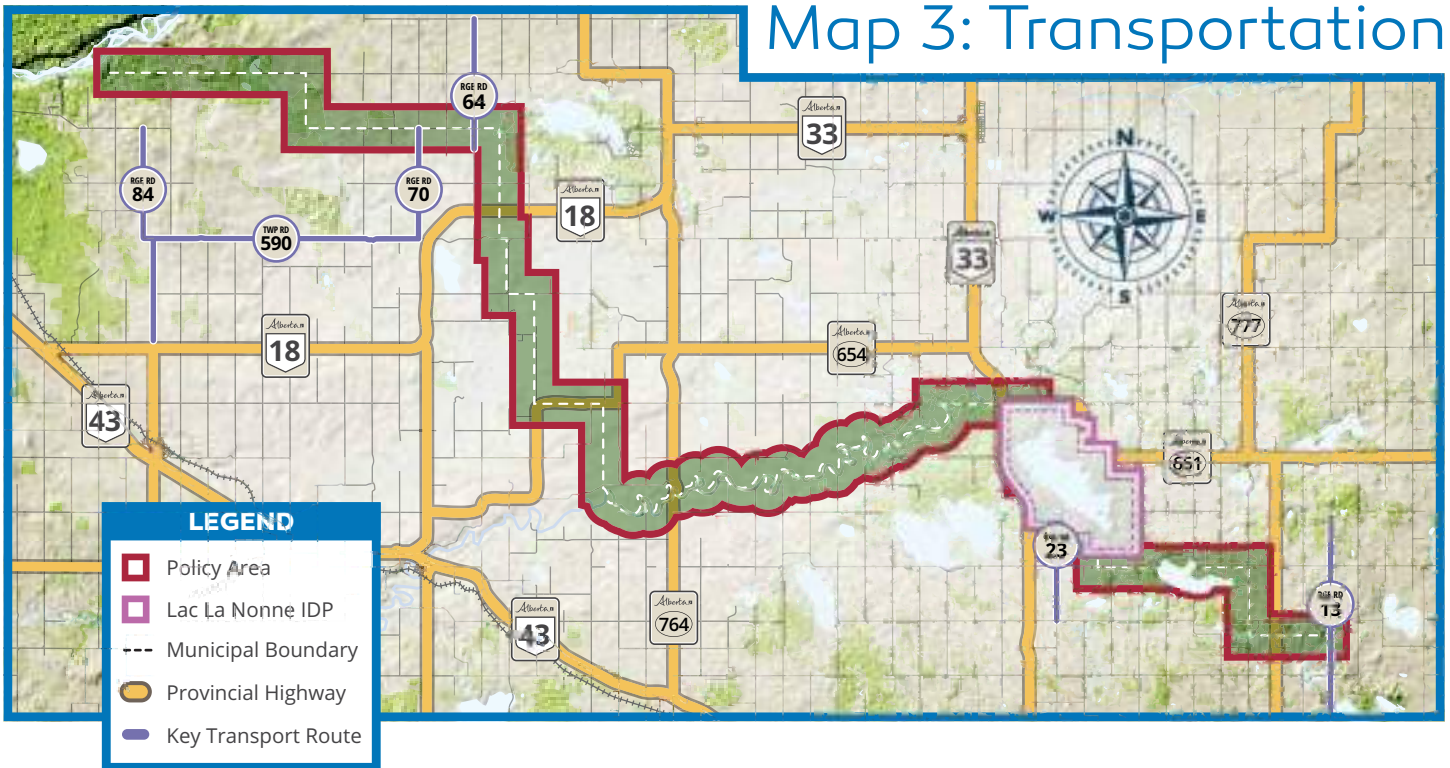
### 6.8 **Natural Resource Development**

The County of Barrhead and Lac Ste. Anne County acknowledge that natural resources play an integral part in the development of their Counties. As such, they will ensure the development of natural resource areas, and that transportation networks are not unduly restricted within the Plan Area.

### 6.9 **Responsible Resource Extraction**

- a. Barrhead and Lac Ste. Anne Counties support the responsible extraction of natural resources within the Plan Area. Any new or expanding gravel extraction proposal within the Plan Area shall:
  - ii. i. Be referred for review and comment;
  - iii. ii. Identify mitigation methods for off-site impacts, potential land use conflicts, and best practices
- b. Prior to surface and sub-surface development, the applicable municipality shall ensure that applicants have provided and obtained permits for compliance with all municipal, provincial and federal regulatory authorities.

# Map 3: Transportation



## ENVIRONMENTAL POLICIES

### 7.1 Environmentally Significant Areas

Environmentally Significant Areas of regional and provincial significance have been identified within Map 3: Transportation.

### 7.2 Environmental Reserve

Both Counties shall follow provincial regulations as it pertains to the dedication, classification, and use of Environmental Reserve, Municipal Reserve, and Conservation Reserve and environmental Reserve Easements in an effort to maintain the integrity of the systems identified in Map 3: Transportation.

At time of development and/or subdivision, both Counties will require the dedication of Environmental Reserve lands along the shoreline of Lac La Nonne, and Lake Nakamun. Reserve or Environmental Reserve Easements will be required along the Pembina River, Paddle River, and any other watercourse in the Plan Area.

### 7.3 Setbacks from Natural Areas

Through respective Land Use Bylaws, both counties shall enforce appropriate development setbacks from bodies of water, watercourses and hazardous landscapes. The governing municipality may require the applicant to supply recommendations, prepared by a qualified professional, regarding development setbacks and/or other required mitigation measures.

### 7.4 Ecosystem Health

Both municipalities will promote environmental stewardship and the health of the regional ecosystem, watersheds, wetlands and Environmentally Significant Areas within the Plan Area.

### 7.5 Connectivity

Where appropriate, both municipalities may collaborate on establishing planned trail network(s) for passive and recreational enjoyment.

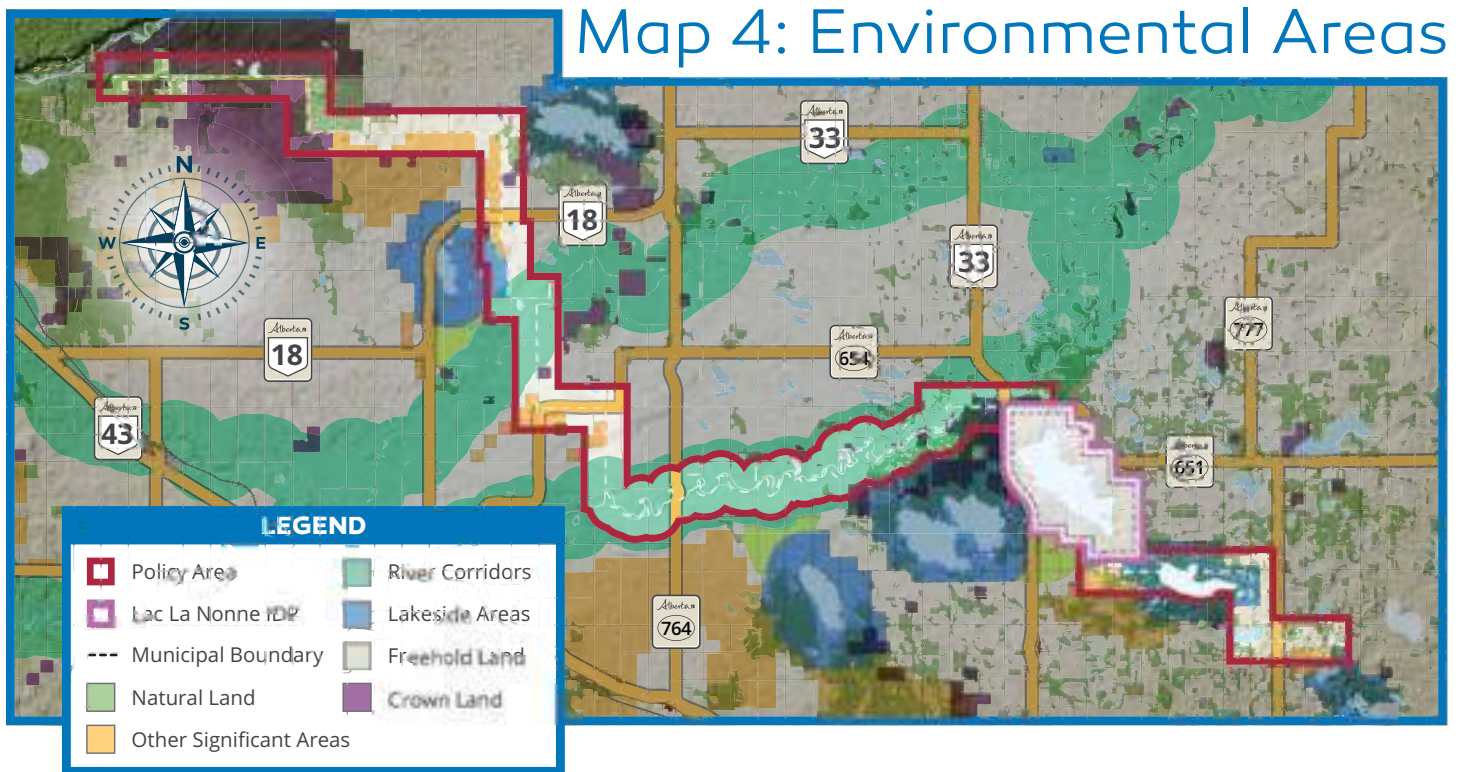
### 7.6 Open Space

Both municipalities recognize the diversity of open spaces within the Plan Area and may seek to identify future open space opportunities.

## ENVIRONMENTAL POLICIES (CONT.)

### 7.7 Watershed Management

Both municipalities shall recognize the importance of wetlands, riparian areas, watercourses, and waterbodies, and will collaborate when reviewing proposals which may impact watershed(s) within the Plan Area. Participation by both municipalities in regional watershed alliance groups will be encouraged, and information and recommendations provided may be considered, where appropriate.



## COORDINATION OF PROGRAMS

### 8.1 Community Programs

The provision of quality community services and programming helps enhance resident quality of life. Both municipalities may choose to collaborate on any social or economic development opportunities which may impact the Plan Area.

## IMPLEMENTATION AND ADMINISTRATION

### 9.1 Adoption

The Intermunicipal Development Plan shall be adopted by Bylaws of both the County of Barrhead and Lac Ste. Anne County in accordance with the *Municipal Government Act*.

### 9.2 Plan Review and Amendments

- a. The Plan shall be reviewed at minimum every five (5) years after the adoption of the IDP.
- b. If the Plan requires amendments or if there is an objection to the Plan by either municipality, the Intermunicipal Committee (IC) shall be established under the Intermunicipal Collaboration Framework will review and discuss changes to the Bylaw.
- c. The Committee is to be a committee comprised of membership as outlined under the Intermunicipal Collaboration Framework.



## DISPUTE RESOLUTION



- 10.1 Both parties agree to follow the dispute resolution procedure established within the Intermunicipal Collaboration Framework, unless the dispute is required to be resolved in accordance with the MGA including the right to appeal to the Land and Property Rights Tribunal as appropriate.
- 10.2 If both municipalities are agreeable to not requiring an Intermunicipal Development Plan, both parties may repeal the IDP and provide notice to the Minister of Municipal Affairs.